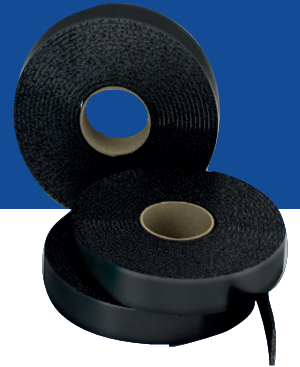


# Instarmac Instaband ECO Joint and Crack Sealent Tape

## APPLICATIONS

Instarmac ECO is a thermoplastic, joint and crack sealent tape designed for application to asphalt roads to prevent water ingress and progressive cracking, which leads to structural failure.



## TECHNICAL

Instaband ECO is supplied in 5 metre/16.4ft rolls, 35mm / 1.3in wide (40mm/ 1.57in wide when installed) x 3mm / 0.11in depth for easy handling.

## PREPARATION

Instaband ECO is easy to apply on asphalt surfaces, always ensure that the area of application is clean, dry and free from dust, chemicals and any significant oil substances. If application to concrete is required the area should be primed. Please ensure that the area has completely cooled before the primer is applied.

## APPLICATION

Preheat the surface making sure it is completely free from moisture. Remove Instaband ECO from its protective wrapping and roll out on to the road surface, beaded side up. Once in place, heat the Instaband ECO with a propane torch. The heat should be applied from a distance of approximately 200 - 400mm / 8 - 16in from the material. Heat in a slow even sweeping motion making sure you do not spot-heat any area, as this may scorch the material causing discolouration. Instaband ECO must be heated until the material starts to bubble and melt. Depending on air temperature, Instaband ECO will cool down and harden within 5-10 minutes of installation. When this has occurred, check for correct installation by trying to lift parts of the material at the edges using a knife or a chisel. If this can be lifted, simply reapply heat until adequate bonding has occurred.

## PRECAUTIONS

When the weather is warmer and the road temperature higher, the setting time for the material may be slightly longer. Do not use Instaband ECO when it is raining or snowing. Ensure surfaces treated with salt or de-icers are fully washed as Instaband ECO will not bond with these substances. Do not unpack more material than is necessary as materials will harden when exposed to UV rays. Take care in excessively cold weather, as the material will become brittle.

## HOT PRODUCTS ONLY

Avoid skin contact with hot product. In case of contact with skin, immediately immerse in or flush area with water. Do not remove product from area and then seek medical advice. In case of contact with eyes rinse with plenty of water and seek medical assistance.

## STORAGE

Do not expose to UV rays as materials will become hard. To ensure material does not become brittle prior to using on site, it is advisable to keep it in the footwell of a vehicle if possible. Store in closed original container in a dry and cool place, material must be handled with extra care in temperatures below 10°C / 50°F as it will be less flexible.

## SHELF LIFE

Shelf life in correct conditions for sealed packaging is 24 months. In cold weather application will be assisted by storing tape overnight at room temperatures.

## HEALTH, SAFETY AND ENVIRONMENTAL

Please ensure that appropriate PPE is used when preparing, mixing and applying products. Always wash your hands before consuming food and make sure that materials are kept safely out of reach of children and animals. Please dispose of packaging and waste responsibly and in accordance with local authority requirements. A full material datasheet relating to this product is available from Da-Lee.

## QUALITY ASSURANCE

Our products are guaranteed against defective materials and manufacture, and will be replaced or money refunded if the goods do not comply with our promotional literature. We cannot however accept any liability arising from the application or use of our products because we have no direct or continuous control over where and how our products are used. All products are sold to our conditions of sale, copies of which can be obtained on request.

## Contact Us

Da-Lee Group, 350 Jones Road, Stoney Creek, ON L8E 5N2, Canada  
Tel: 905 643 1135 Email: [contact@daleegroup.com](mailto:contact@daleegroup.com) Website: [daleegroup.com](http://daleegroup.com)