

# QC10 TROPICAL

## Fast Setting Concrete

### APPLICATIONS

QC10 Tropical is a specially formulated, two-part, polymer and fibre-modified concrete designed for backfilling around manhole frames and catch basins. It is also suitable for surface repairs on bridge decks. Engineered to perform in higher temperature conditions or when more finishing time is required, QC10 Tropical ensures durability and reliability in challenging environments.



### TECHNICAL

QC10 F Tropical contains special cements and graded aggregate, the product requires only the addition of water on site to form a high strength concrete. QC10 Tropical is suitable for applications from 1" to 8" in one pass.

### PREPARATION

All surfaces should be free from oil, grease, dust or any other visible contaminants. Remove all loose particles and work on a sound substrate. Pre-soak the area with clean water prior to application aid bond. Remove ponded water before applying the product. Good concrete practice should always be observed to enable the mix to be placed into position within 4 minutes.

### MIXING

QC10 F Tropical can be mixed mechanically or by hand. If by hand, ensure that the mixing is vigorous. Mix the inner bag containing the cement with the sand/aggregate. QC10 F Tropical is formulated to be mixed to smooth flowable consistency. It is advisable to add a maximum of 0.5 gallons of water initially, mix and if required, add up to a further 0.6 gallons. Note: It is essential that this product not be over-watered. The addition of excessive water will result in slower strength gain, reduced final compressive strength and the possibility of shrinkage cracking. Sand/aggregate contains moisture and the volume of water required will vary depending on the moisture content of the aggregate. Mix only enough material to apply within 4 minutes. Never remix or add water. If the product needs to be applied to walls then the water content can be reduced to obtain a stiffer consistency.

### PLACING

QC10 F Tropical should be poured into place (if required lightly trowel to ensure good contact with the edges). Clean any mixing equipment with water immediately after use.

### STORAGE

Store in sealed original packaging, at temperatures between 41° F and 86° F. Avoid frost. This product must be stored in unopened bags, clear of the ground in cool dry conditions and protected from excessive drafts. If stored correctly and used within 24 months of the date shown on the bag, the activity of the reducing agent will be maintained and this product will contain, when mixed with water, no more than 0.0002% (2ppm) soluble Chromium (VI) of the total dry weight of the cement. Compliance number: 2099 • 250 C - 400 C

### SHELF LIFE

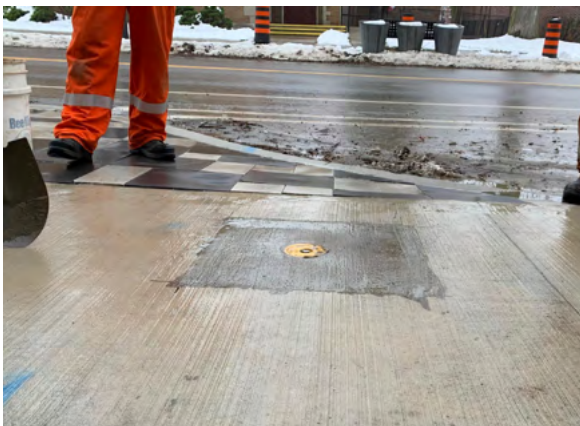
Shelf life from date of manufacture in correct conditions for sealed packaging is 24 months but will still perform beyond this point. Note: The use of this product after the end of the declared storage period may increase the risk of an allergic reaction. High temperatures and high humidity will lead to a reduced shelf life.

### HEALTH, SAFETY AND ENVIRONMENTAL

Please ensure that appropriate PPE is used when preparing, mixing and applying products. Always wash your hands before consuming food and make sure that materials are kept safely out of reach of children and animals. Please dispose of packaging and waste responsibly and in accordance with local authority requirements. A full material datasheet relating to this product is available from Da-Lee.

**STORAGE**

All products are manufactured in a plant whose quality management system is certified / registered as being in conformity with BS EN ISO 9001. Our products are guaranteed against defective materials and manufacture, and will be replaced or money refunded if the goods do not comply with our promotional literature. We cannot however accept any liability arising from the application or use of our products because we have no direct or continuous control over where and how products are used. All products are sold subject to our conditions of sale, copies of which may be obtained on request.



Gas valve box in sidewalk



Curb repair



Manhole restoration to surface

**TECHNICAL**

Compressive strength (N/mm2)	
60 minutes	3000 PSI
1 day	40.10
7 days	50.00
28 days	9000 PSI
Workability*	5-10 minutes @ 300C 12-18 minutes @ 200C 24-36 minutes @ 100C
Set time*	10-20 minutes @ 300C 30-40 minutes @ 200C 60-80 minutes @ 100C
Density	2300kg/m3
Coverage	1.14 bags is 1 ft <sup>3</sup>
Colour	Grey As with all raw materials, colour variation may occur. This does not affect the consistency or characteristics of the product.
Unit/packaging	55lbs/25kg bags (56 units per pallet)



New York State DOT bridge deck repairs